



DRAWINGS MUST BE APPROVED BEFORE WORK WILL START. DRAWING APPROVAL VERIFIES THAT ALL DIMENSIONS ARE CORRECT AND ACCEPTABLE FOR THE CUSTOMER.

APPROVED BY:

SIGNED:

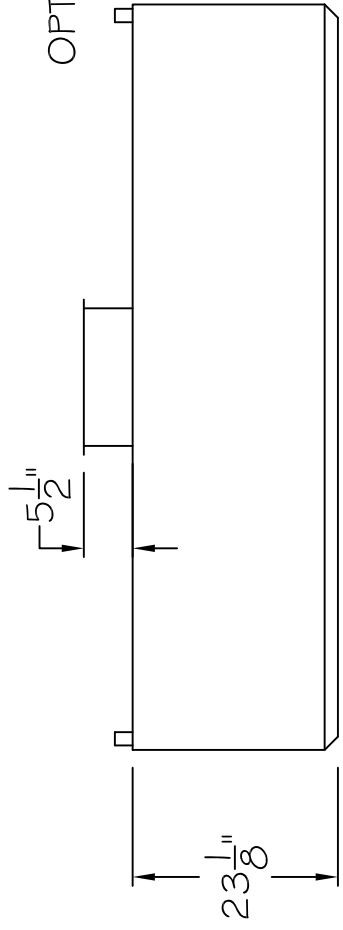
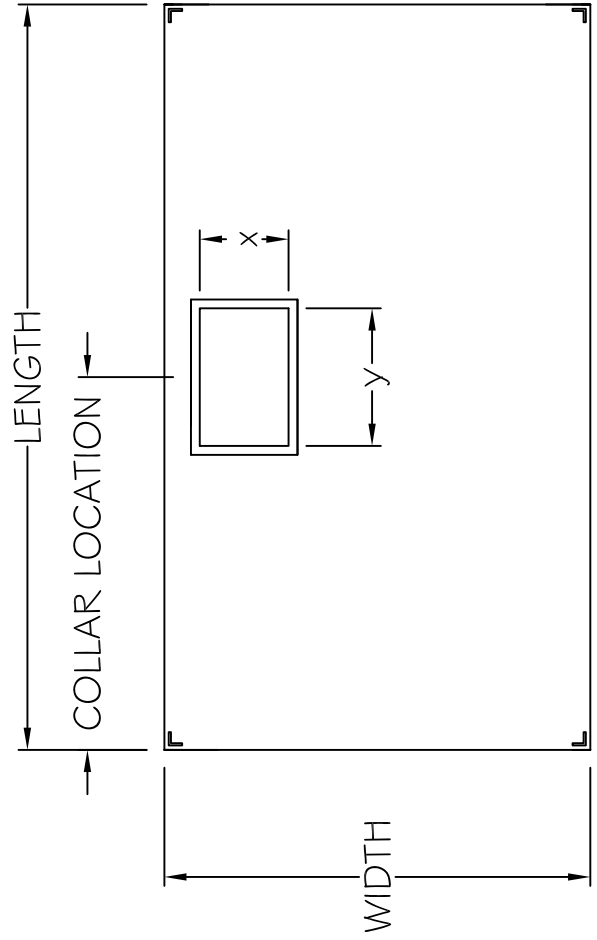
DATE:

NOTES:

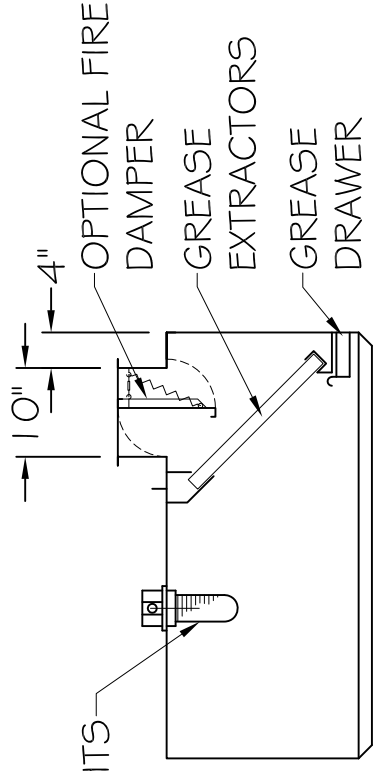
EXHAUST VOLUME: AS SPECIFIED BY MECHANICAL ENGINEER

ALL WELDED HOOD CONSTRUCTION TO STANDARDS EQUAL TO N.F.P.A. #96. U.L.C. LISTED - FILE # CR2206

20" X 20" GREASE EXTRACTORS, U.L.C. LISTED - FILE # CR1034



OPTIONAL LIGHTS



CROSS-SECTION

<p>PROJECT: <b>HERCULES EXHAUST HOOD</b></p>	SCALE: NTS	DATE:	<p>ITEM #:</p>
	CHECKED BY:	DRAWN BY: GNL	
	REVISION DATE:		
<p>THE CONTRACTOR AND ALL HIS SUB TRADES SHALL VERIFY ALL DIMENSIONS PRIOR TO THE COMMENCEMENT OF WORK.</p>	<p>THIS DRAWING IS THE PROPERTY OF HERCULES FOOD EQUIPMENT AND IS NOT TO BE USED OR REPRODUCED IN WHOLE OR IN PART WITHOUT THE WRITTEN CONSENT OF HERCULES FOOD EQUIPMENT</p>		

**HERCULES** Food Equipment Limited  
 145 Millwick Drive, Toronto, Ontario, M9L 1Y7  
 Tel : 416-742-9673 Fax : 416-742-6486  
 e-mail : sales@herculesfoodequipment.com